



ADVANCED ANTI-WRINKLE COURSE OVERVIEW

By Ampika's Aesthetics

AM I ELIGIBLE?

- This course is designed for medics and non-medics who are qualified in Foundation Anti-Wrinkle and have been practicing for at least 6 months.
- If you're not injectable trained, you can attend our beginners course, Ultimate Aesthetics, to gain this qualification before attending Advanced Anti-Wrinkle.
- You will complete this course with full accreditation. There is a 100% pass rate as we will continue to work with you until you can graduate



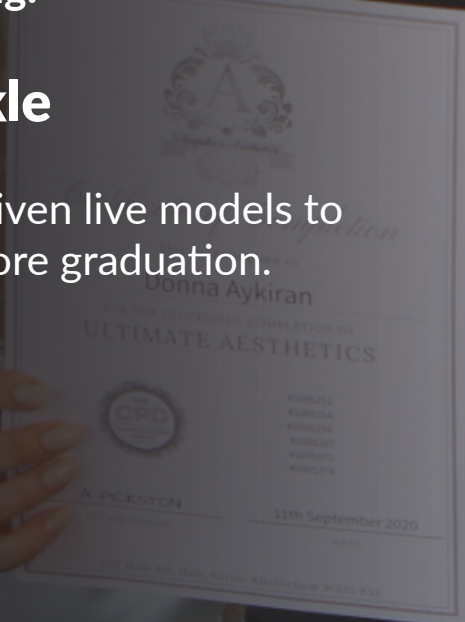


QUALIFICATION AWARDED

Upon completion of the course, you will gain
CPD accreditation in the following:

Advanced Anti-Wrinkle

Along with this, you will also be given live models to
perform your case studies on before graduation.



TIMETABLE

DAY 1

- Introduction meet and greet.
- Theory of anti-wrinkle injectables:
 - Benefits of anti-wrinkle injectables
 - Contraindications
 - Cautions
 - Injection techniques
 - Lessening and eliminating lines and wrinkles
 - Softening features
 - Preparing to inject
 - Facial muscles and arteries
 - Marking up
 - Areas and units (*Bunny Lines, Jawlines, Gummy Smiles, Downward Smile, Hyperhidrosis, Brow Lift, Neck Lift*)
 - Aftercare
 - Demonstration of anti-wrinkle injectables on live models
 - Practical case studies on live models
 - Course recap
- Graduation.





ARRIVAL

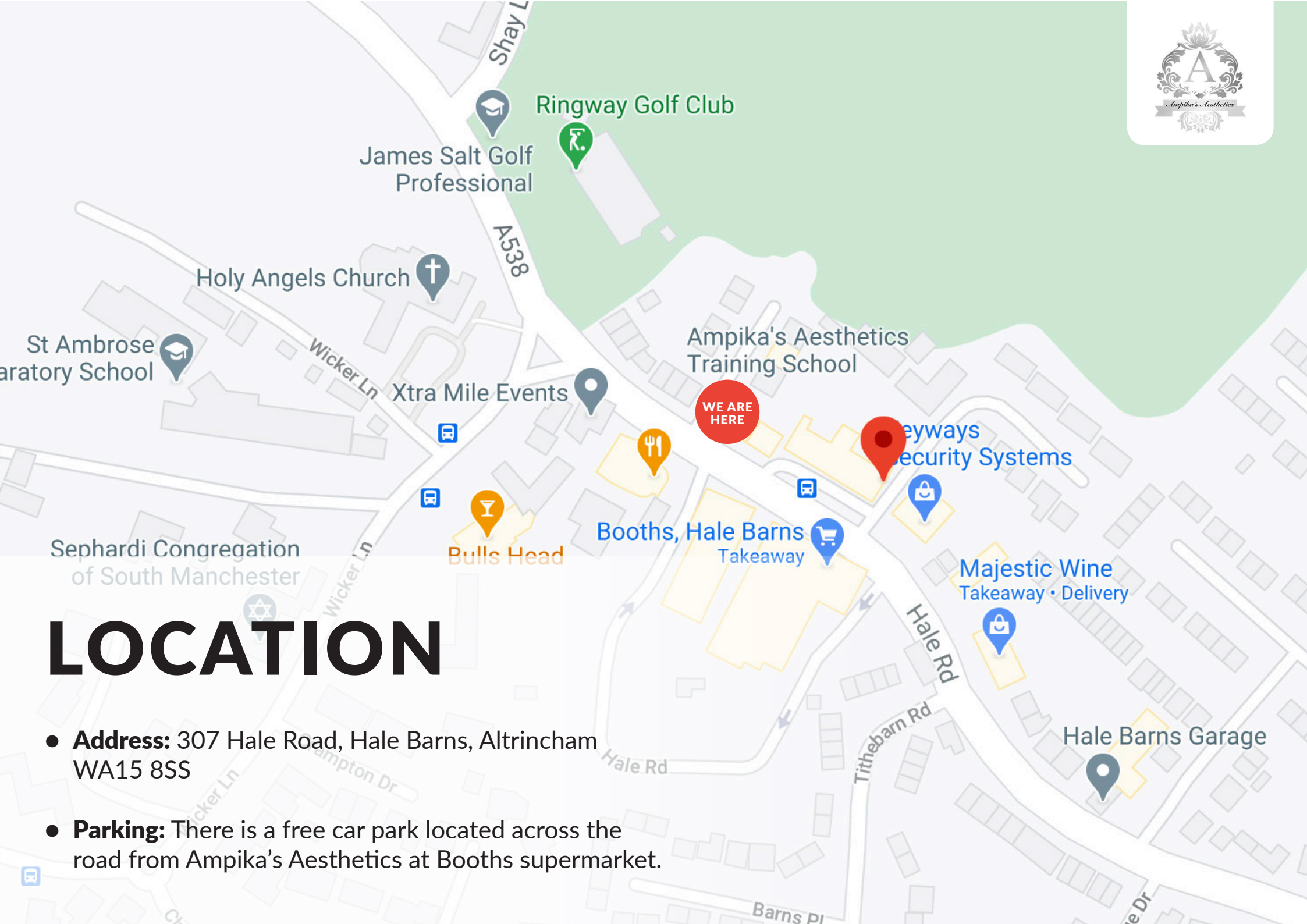
All classes start at 9:30am prompt. You are to arrive between 9:00am - 9:15am ready to start each day. The courses finish at approximately 5:00 - 6:30pm each day but may vary depending on your course content.

Due to the recent outbreak of COVID-19, all students will have their temperature checked upon arrival at our training academy.

You will be required to Track and Trace upon entering the clinic so please ensure you have the NHS Track and Trace App installed on your mobile phone ready. You can download the app here: www.covid19.nhs.uk

Lunch will be provided by Ampika's Aesthetics. You will be given vouchers to spend in Booths supermarket.





LOCATION

- **Address:** 307 Hale Road, Hale Barns, Altrincham WA15 8SS
- **Parking:** There is a free car park located across the road from Ampika's Aesthetics at Booths supermarket.

TRANSPORT

- **Bus:** There is a bus stop directly outside the training academy. Services 88, 288 and 284 stop here.
- **Tram:** The nearest tram stop to Ampika's Aesthetics is the Manchester Airport line. This stop is 3 miles from the academy.
- **Train:** The nearest train station to our academy is Hale Station as it's only 2 miles away. Another close by station is Manchester Airport which has access to more lines.
- **Taxi:** As we are situated near the airport, there is always a high number of taxi services available in the area at short notice. Uber's also available.





ACCOMMODATION

- **Bulls Head:** Wicker Ln, Hale Barns, Altrincham
WA15 0HG
Travel Time: 2 minute walk to Ampika's Aesthetics.
- **Manchester Airport:** Premiere Inn, Runger Lane,
Wilmslow Road, Manchester Airport, M90 5DL
Travel Time: 8 minute drive to Ampika's Aesthetics.
- **Marriot Hotel:** Hale Road, Hale Barns, Manchester
WA15 8XW
Travel Time: 3 minute drive to Ampika's Aesthetics.
- **Hale Barns House:** Oak Croft, Hale, WA15 8UU
Travel Time: 3 minute drive to Ampika's Aesthetics.
- **Holiday Inn:** Runger Lane, Manchester Airport,
Manchester, M90 5DL
Travel Time: 6 minute drive to Ampika's Aesthetics.
- **Airbnb** in Hale Barns





DRESS CODE

Appropriate attire is needed throughout the duration of the course as this is a clinical environment.

You will be expected to:

- Wear flat, sensible, closed-toe shoes
- Wear tunic or salon wear
- Wear leggings/pants
- Have your hair tied back
- Provide your own protective face mask or visor

Failure to do so will put the clients and yourself at risk.



COVID-19 REGULATIONS



Due to the recent outbreak of COVID-19, all students will have their temperature checked upon arrival at our training academy. If you are experiencing any symptoms of COVID-19 you will not be permitted to enter and continue on the course. This is for the protection of everyone.

You will be required to sign a disclaimer to state that you have not experienced a high temperature or any of the following symptoms:

- A high temperature –this means you feel hot to touch on your chest or back (you do not need to measure your temperature).
- A new, continuous cough –this means coughing a lot for more than an hour, or 3 or more coughing episodes in 24 hours (if you usually have a cough, it may be worse than usual).
- A loss or change to your sense of smell or taste –this means you've noticed you cannot smell or taste anything, or things smell or taste different from normal.

All students are to wear a mask or visor during their time at the school.

You will also be required to Track and Trace upon entering the clinic so please ensure you have the NHS Track and Trace App readily installed on your mobile phone ready to participate. You can download the app here: www.covid19.nhs.uk

During lunchtime and refreshment breaks all students are to respect the 1-metre plus social distancing rule and not be any closer to teachers or fellow students.

When carrying out treatments on live models, masks and visors must be worn.



If you have any further questions, please contact
us via email at ampikasaesthetics@gmail.com
or call us on 0333 996 2690

Ampika Pickston